

KIMALLOY
INNOVATIVE REPAIR & PROTECTIVE CHEMICALS

Marine Applications

KIMALLOY Products Commonly Used In Marine Industry



Product	Description	Main features	Areas of use
KIM-FILL 232	Low specific gravity Polymeric putty for filling and rebuilding applications.	<ul style="list-style-type: none">• Low specific gravity 0.8.• Excellent workability.• Economic.• Reduce the total mass of object.• Chemical resistant.	<ul style="list-style-type: none">• Filling joints and voids in boats, yachts, sailboats, ships, and transportation objects.• Rebuilding defects.• Bonding woody and composite sheets.
KIM-FILL 234	Low specific gravity Polymeric putty for filling and rebuilding applications.	<ul style="list-style-type: none">• The lowest specific gravity 0.6.• Excellent workability.• Economic.• Highly reduce the total mass of object.• Chemical resistant.	<ul style="list-style-type: none">• Filling joints and voids in boats, yachts, sailboats, ships, and transportation objects.• Rebuilding defects.• Bonding woody and composite sheets.
KIM-LAM 924	Clear epoxy resin	<ul style="list-style-type: none">• Very low viscosity.• Long pot life and proper application for hot weather.• Excellent chemical resistance.• High UV resistance.• Sprayable and easy to apply.• High coverage rate.	<ul style="list-style-type: none">• Protection of woody yachts, sailboats, and boats.• Used as a fabric saturator in composite boats.• Repair of composite equipment.

KIMALLOY Products Commonly Used In Marine Industry



Product	Description	Main features	Areas of use
KIM-LAM 930	Clear epoxy resin	<ul style="list-style-type: none">• Very low viscosity.• Fast curing.• Excellent chemical resistance.• High UV resistance.• Sprayable and easy to apply.• High coverage rate.	<ul style="list-style-type: none">• Protection of woody yachts, sailboats, and boats.• Used as a fabric saturator in composite boats.• Repair of composite equipment.
KIM-COAT 911	coating with water tolerance	<ul style="list-style-type: none">• Bonds to damped surfaces.• Cures and bonds underwater.• Good chemical resistance.	<ul style="list-style-type: none">• Marine structures.• Splash zone components and structures.• Ship hulls and tidal areas.
KIM-FILL 912	Rebuilding and repair putty with water tolerance	<ul style="list-style-type: none">• Bonds to damped surfaces.• Thixotropic and no sagging.• Cures and bonds underwater.• Good chemical resistance.	<ul style="list-style-type: none">• Rebuild metal defects.• Repairs in plash zone components and structures.• Ship hulls and tidal areas.• Ship mechanical equipment.• Stop water leaks in emergency cases.
KIM-COAT 141	Steel primer coating system 60% zinc content.	<ul style="list-style-type: none">• High corrosion protection.• Easy to apply.• Available in 2 colors for better inspection.• Provides cathodic protection to steel.• Compatible with many top coats.• Fast drying.	<ul style="list-style-type: none">• Ship hulls below and above water line.• Ballast tanks and cargo holds.• Offshore structures and platforms.• Ship building and repair..• Steel superstructures in ships and ports.

KIMALLOY Products Commonly Used In Marine Industry



Product	Description	Main features	Areas of use
KIM-COAT 143	Steel primer coating system. 85% zinc content.	<ul style="list-style-type: none">• Excellent corrosion protection.• Easy to apply.• Available in 2 colors for better inspection.• Highly provides cathodic protection to steel.• Compatible with many top coats.• Fast drying.	<ul style="list-style-type: none">• Ship hulls below and above water line.• Ballast tanks and cargo holds.• Offshore structures and platforms.• Ship building and repair..• Steel superstructures in ships and ports.
KIM-COAT 170	Multi color epoxy top coat	<ul style="list-style-type: none">• Resistant to sea water.• Multi colors.• High mechanical properties.• High adhesion strength.• Sprayable.	<ul style="list-style-type: none">• Ships, yachts, and boats coating above waterline.• Marine structures and platforms.• Composite parts.
KIM-COAT 172	Multi color acrylic top coat	<ul style="list-style-type: none">• UV resistant.• Economic.• High coverage rate.• Sprayable.• Good mechanical properties.	<ul style="list-style-type: none">• Ships, yachts, and boats coating above waterline.• Marine structures and platforms.• Composite parts.
KIM-COAT 970	Epoxy Antifouling coating system	<ul style="list-style-type: none">• Excellent antifouling property.• Excellent adhesion to steel.• Sprayable.• High mechanical properties.• High durability	<ul style="list-style-type: none">• Ship hulls.• Offshore platforms.• submerged structures.• Ballast tanks and sea chests.

KIMALLOY Products Commonly Used In Marine Industry



Product	Description	Main features	Areas of use
KIM-COAT 972	Acrylic antifouling coating system	<ul style="list-style-type: none">• Excellent antifouling property.• Economic.• Fast curing.• Sprayable.• Self-polishsing action.• UV resistant.	<ul style="list-style-type: none">• COMMERCIAL VESSEL HULLS.• Faster boats.• Marine structures.
KIM-RC 222	Rapid curing putty.	<ul style="list-style-type: none">• Very fast curing that can be sanded after 5 minutes.• Good abrasion resistance.• Good temperature stability.	<ul style="list-style-type: none">• Emergency cases.• Short maintenance repairs.• Bolts and threaded holes.• Fluid leaks.
KIM-FILL 212	Heavy duty Ceramic putty for metal filling and rebuilding applications	<ul style="list-style-type: none">• Fast curing.• Excellent abrasion resistance.• Excellent temperature stability.• High chemical resistance.• Machinable.	<ul style="list-style-type: none">• Marine engines repair.• Marine shafts.• Propellers.• Diesel generators, compressors , and pumps.
KIM-FILL 211	Heavy duty ceramic coating for metal protection and repair.	<ul style="list-style-type: none">• Fast curing.• Excellent abrasion resistance.• Excellent temperature stability.• Excellent chemical resistance.	<ul style="list-style-type: none">• Heat exchangers.• Pumps and tanks.• Propellers.• Chillers and separators• Any area exposed to high chemical, thermal, wear stresses.

Protective Coating Systems



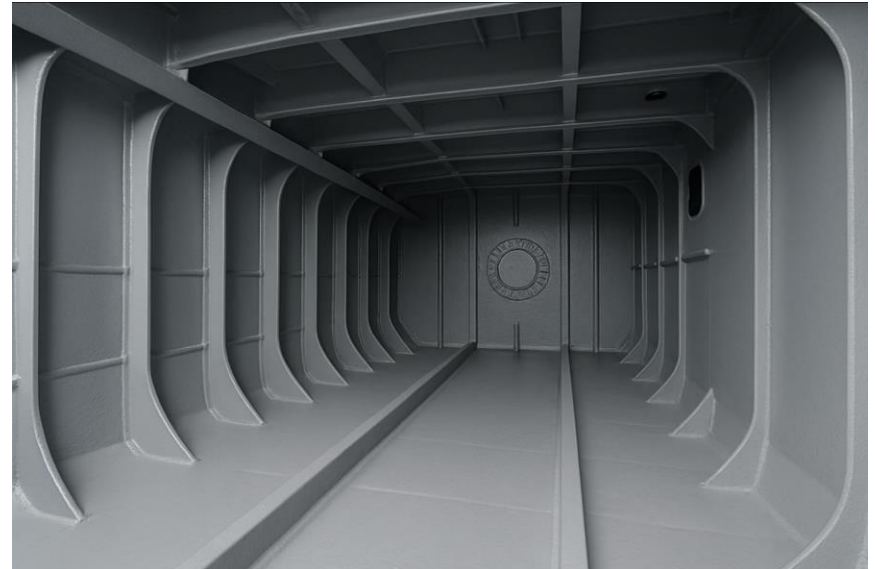
UV protection.
Controlled curing time.
Self-polish.
Chemical resistance.



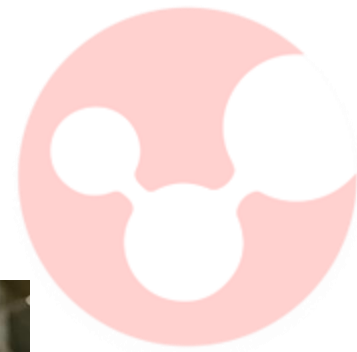
Protective Coating Systems



High mechanical properties.
Anti-fouling.
Excellent corrosion resistance.
Chemical resistance.
Cathodic protection.



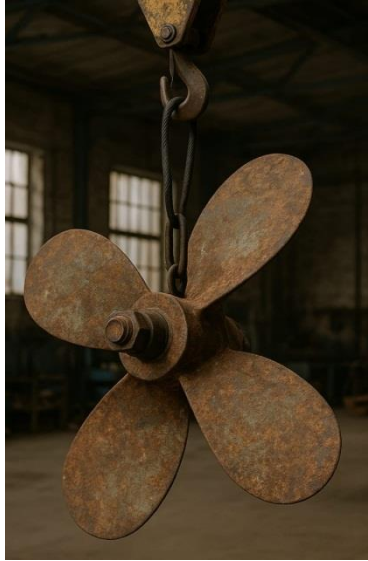
Composites



High mechanical properties.
Light weight.
Economic.
Chemical resistance.
Multi-colors.



Maintenance and Repair



**Excellent wear
resistance.
Excellent thermal
properties.
Excellent chemical
resistance.
Super heavy duty
products.**

KIMALLOY In Marine Industry



- Supply products with the best competitive prices.
- Technical study to the case and product selection.
- Provide technical training for the maintenance crew.
- Samples are ready for trials.

www.kimalloy.com

info@kimalloy.com